



CRIME SUMMARY

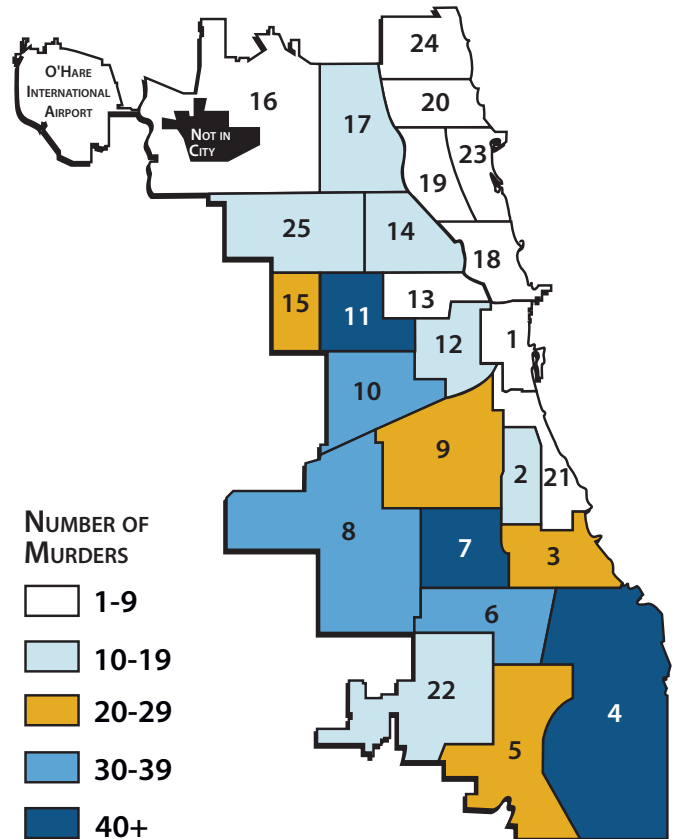
CHICAGO • 2009

• January-December 2009 •

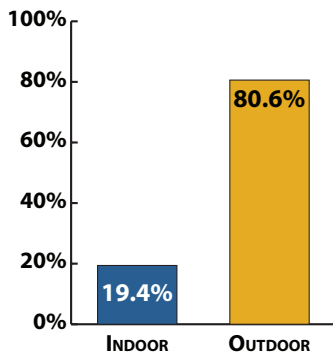
Index Crime

	Jan-Dec 2008	Jan-Dec 2009	% Change
Murder	512	458	-10.5 %
Criminal Sexual Assault	1,584	1,443	-8.9 %
Robbery	16,697	15,867	-5.0 %
Aggravated Assault	6,250	5,698	-8.8 %
Aggravated Battery	10,811	10,020	-7.3 %
Burglary	26,177	26,456	1.1 %
Theft	87,489	78,209	-10.6 %
Motor Vehicle Theft	18,841	15,472	-17.9 %
Arson	632	610	-3.5 %
Violent Property	35,854	33,486	-6.6 %
TOTAL	168,993	154,233	-8.7 %

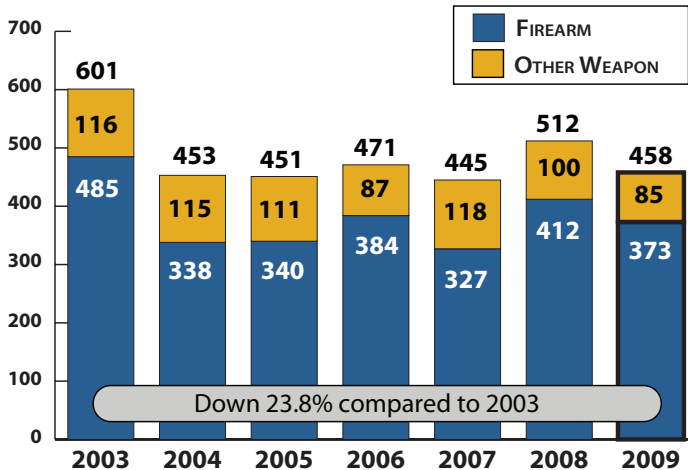
January-December 2009 Murder Totals by District



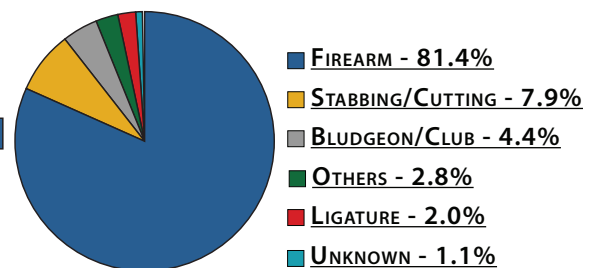
January-December 2009 Murder Location



January-December Murder Totals: 2003-2009

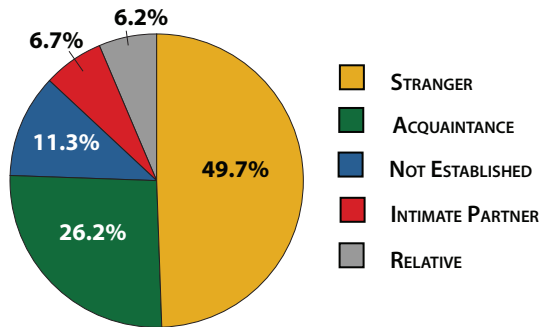


January-December 2009 Murder by Weapon Type



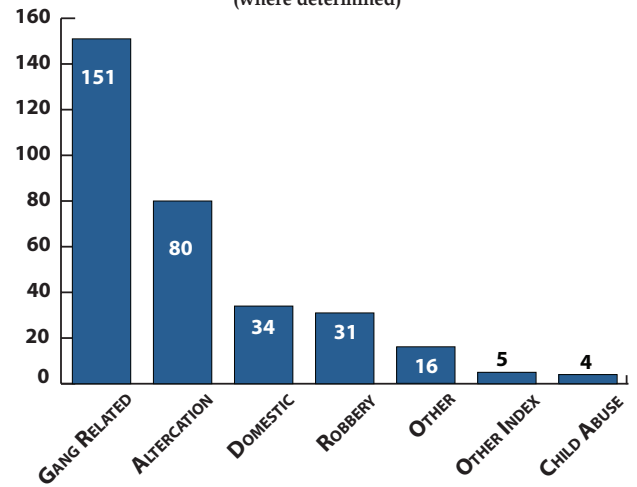
CRIME SUMMARY

January-December 2009
Murder Victim's Relationship to Offender*



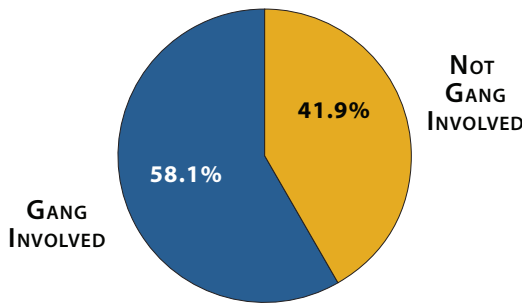
* Cleared murders only.

January-December 2009
Murder Totals by Motive*
(where determined)



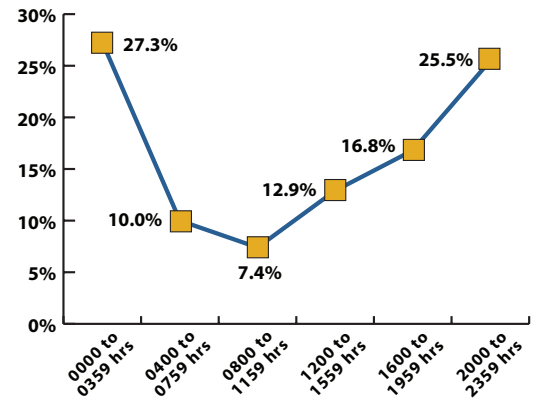
* 137 murders had undetermined motives

January-December 2009
Murder was Gang-Involved*

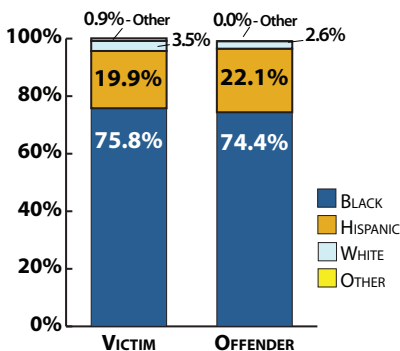


* Defined as either involving a victim or offender with known gang association or the incident was gang related.

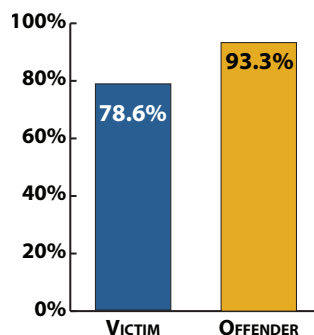
January-December 2009
Time of Murder Injury



January-December 2009
Murder Victim and Offender
Race



January-December 2009
Murder Victim and Offender
Prior CPD Record



January-December 2009
Age of Murder Victim

