



CRIME SUMMARY

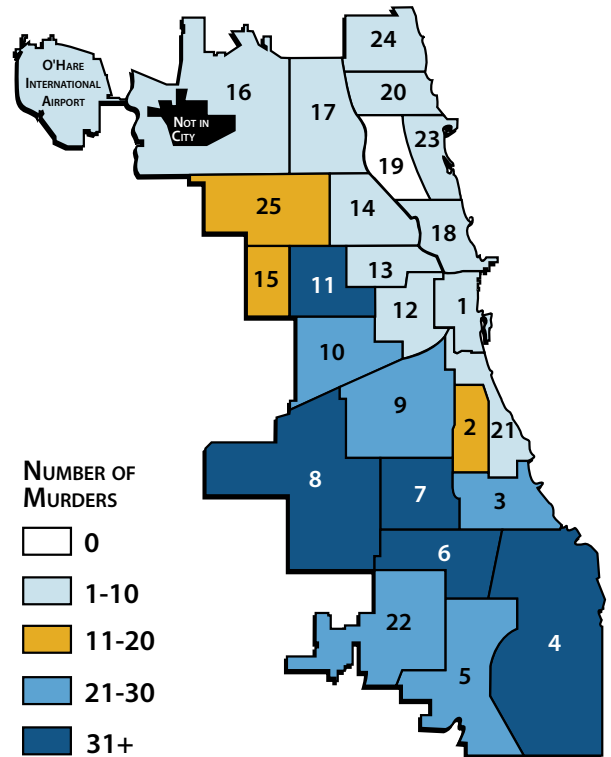
CHICAGO • 2010

• January-December 2010 •

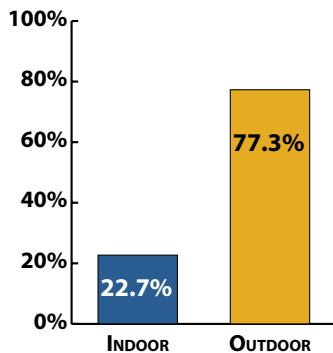
Index Crime

	Jan-Dec 2009	Jan-Dec 2010	% Change
Murder	460	436	-5.2%
Criminal Sexual Assault	1,479	1,359	-8.1%
Robbery	15,937	14,205	-10.9%
Aggravated Assault	5,741	5,033	-12.3%
Aggravated Battery	10,092	9,360	-7.3%
Burglary	26,730	26,140	-2.2%
Theft	79,763	74,561	-6.5%
Motor Vehicle Theft	15,458	19,016	23.0%
Arson	608	516	-15.1%
Violent Property	33,709	30,393	-9.8%
TOTAL	156,268	150,626	-3.6%

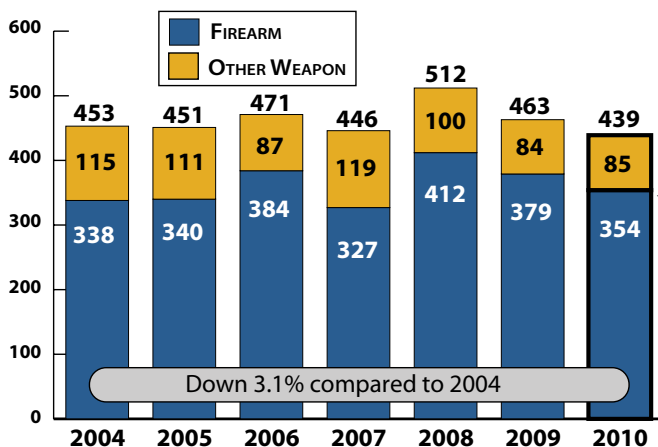
January-December 2010 Murder Totals by District



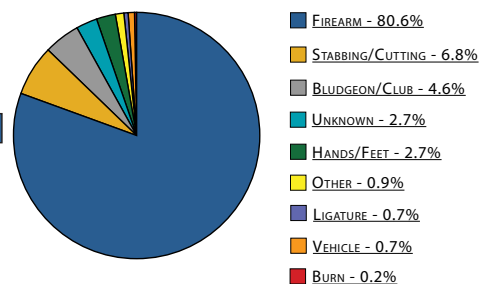
January-December 2010 Murder Location



January-December Murder Totals: 2004-2010



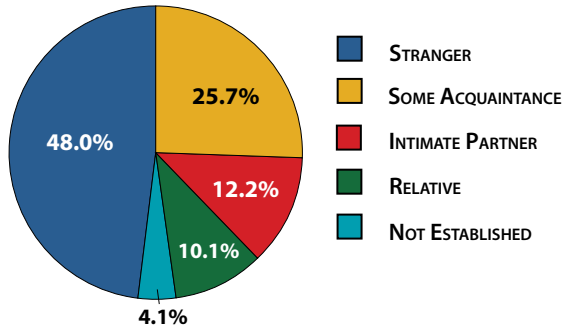
January-December 2010 Murder by Weapon Type



NOTE: EFFECTIVE 2009, A CHANGE TO THE DATA SYSTEM MADE IT POSSIBLE TO RECORD MULTIPLE WEAPON TYPES. THERE WERE THREE 2009 MURDERS AND THREE 2010 MURDERS IN WHICH MULTIPLE WEAPON TYPES WERE RECORDED.

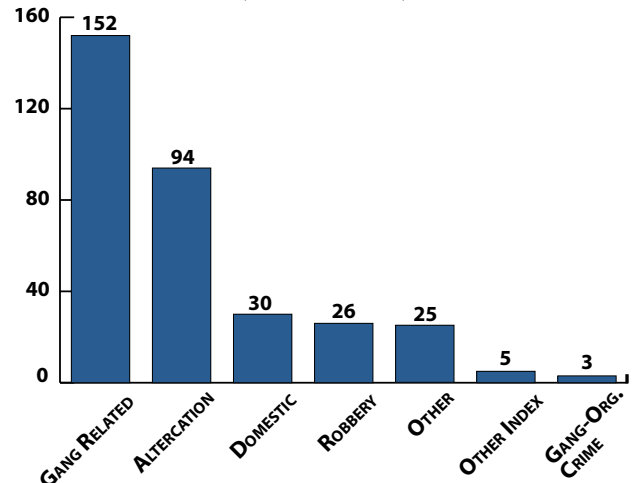
CRIME SUMMARY

January-December 2010
Murder Victim's Relationship to Offender*



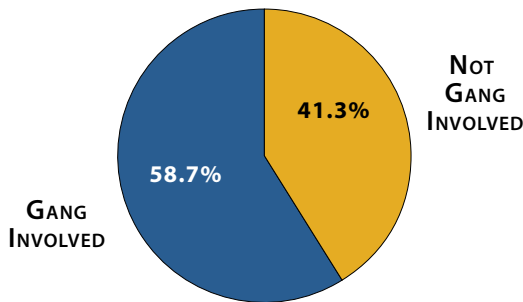
* Cleared murders only.

January-December 2010
Murder Totals by Motive*
(where determined)



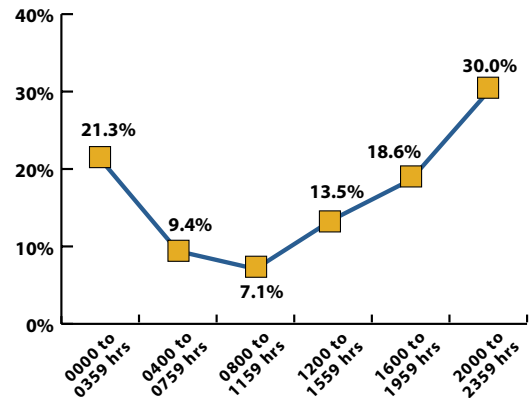
* 101 murders had undetermined motives

January-December 2010
Murder was Gang-Involved*

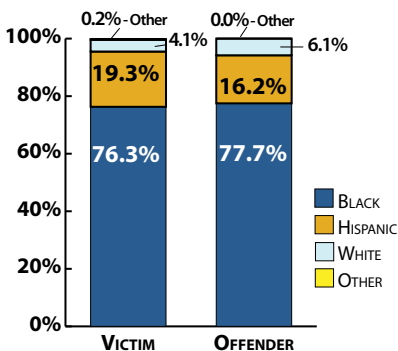


* Defined as either involving a victim or offender with known gang association or the incident was gang related.

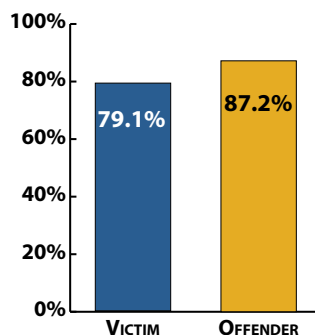
January-December 2010
Time of Murder Injury



January-December 2010
Murder Victim and Offender
Race



January-December 2010
Murder Victim and Offender
Prior CPD Record



January-December 2010
Age of Murder Victim

